

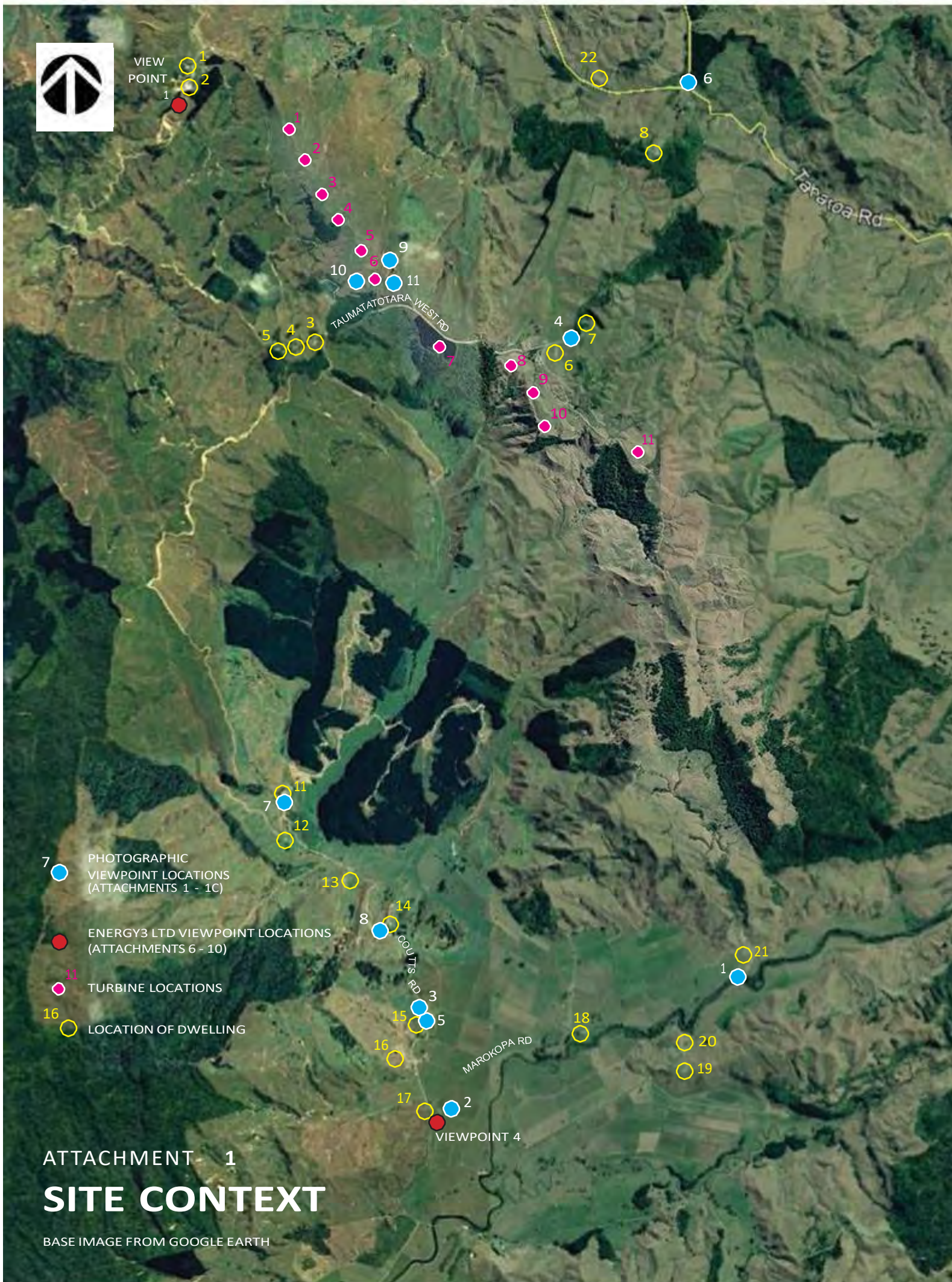
Proposed Variation to Consent
Taumatatotara Wind Farm Ltd

GRAPHIC ATTACHMENTS

10 December 2020



NORTHEASTWARDS VIEW FROM THE CORNER OF
MAROKOPA ROAD AND COUTTS ROAD (SITE ON RIDGELINE).
PHOTOGRAPH BY J. HEAD 8 AUGUST 2019.



Viewpoint 1 looking northwards from Marokopa Road toward Awamarino Ltd (house 21). Photograph by J. Head, 8 August 2019, 50mm focal length.



Viewpoint 2 looking westwards from Marokopa Road near the Coutts Road intersection to house 17 (at left), house 16 (at right). Photograph by J. Head, 8 August 2019, 50mm focal length.



Viewpoint 3 looking southwards from Coutts Road to house 15. Photograph by J. Head, 8 August 2019, 50mm focal length.



House 22 on Taharoa Road to northeast of site (yellow ring). Knoll to south of house precludes views to site.



Viewpoint 4 looking southwestwards to house 6 (at left).
Photograph by A. Morton, Opus, 14 February 2012.



Viewpoint 6 looking southeastwards from the junction of Taharoa Road and Te Waitere Road. *Photograph by A. Morton, Opus, 14 February 2012.*



Viewpoint 5 looking northeastwards towards windfarm site from Coutts Road below house 15. *Photograph by A. Morton, Opus, 14 February 2012.*



Viewpoint 7 looking northeastwards from the end of Coutts Road towards the windfarm site. Topography and vegetation precludes visibility of part of windfarm. *Photograph by A. Morton, Opus, 14 February 2012.*



Viewpoint 8 looking northeastwards towards windfarm site from Coutts Road above house 14. *Photograph by A. Morton, Opus, 14 February 2012.*



Viewpoint 9 Northwards view towards Kawhia from windfarm site near the location for turbine 6.
Photograph by A. Morton, Opus, 14 February 2012.



Viewpoint 10 Westwards view towards coast line from the windfarm site near the location for turbine 6.
Photograph by A. Morton, Opus, 14 February 2012.

ATTACHMENT 1B

SITE IMAGES - EXISTING SITUATION



Viewpoint 11 Southwards view towards the Marokopa Valley from the windfarm site near the location for turbine 6.
Photograph by A. Morton, Opus, 14 February 2012.

ATTACHMENT 1C

SITE IMAGES - EXISTING SITUATION

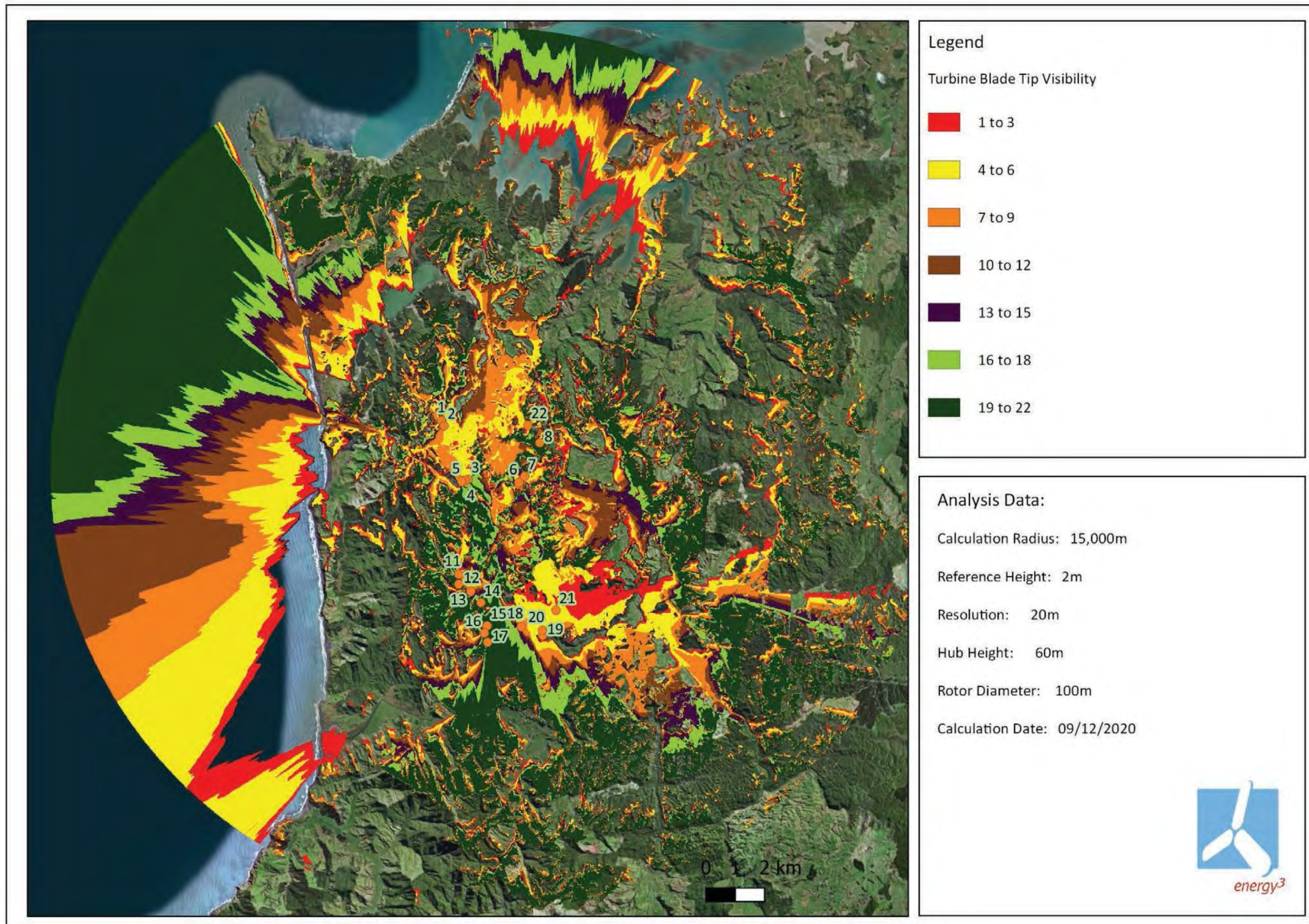


Figure 12: Original 22 turbine ZVI, 15km

ATTACHMENT 2

ZONES OF THEORETICAL VISIBILITY MAPPING - CONSENTED SCHEME

(FROM FIGURE 11 MAP BY ENERGY3 SERVICES LTD REPORT PROVIDED BY APPLICANT)

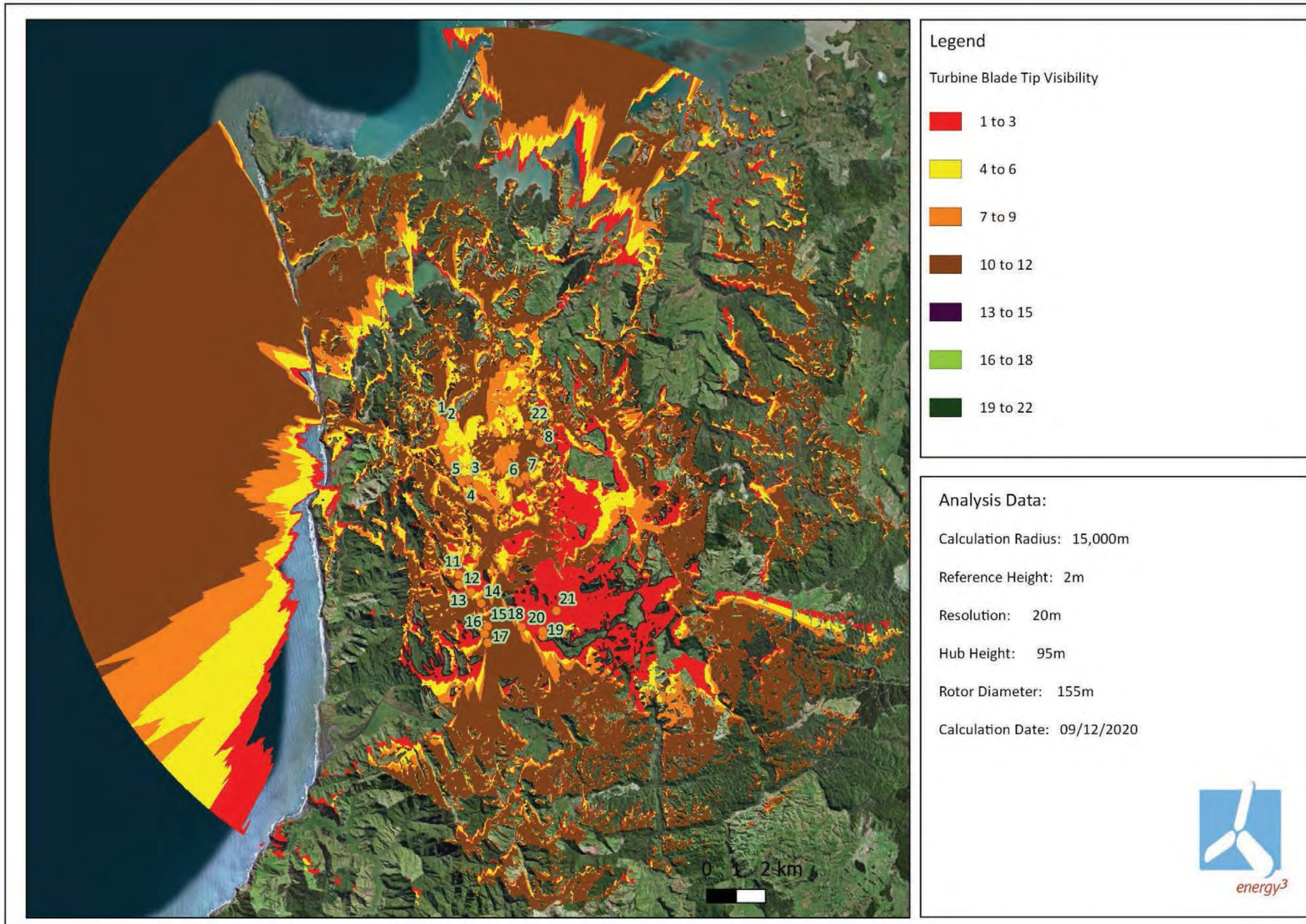


Figure 13: Revised 11 turbine ZVI, 15km

ATTACHMENT 3

ZONES OF THEORETICAL VISIBILITY MAPPING - PROPOSAL

(FROM FIGURE 12 MAP BY ENERGY3 SERVICES LTD REPORT PROVIDED BY APPLICANT)

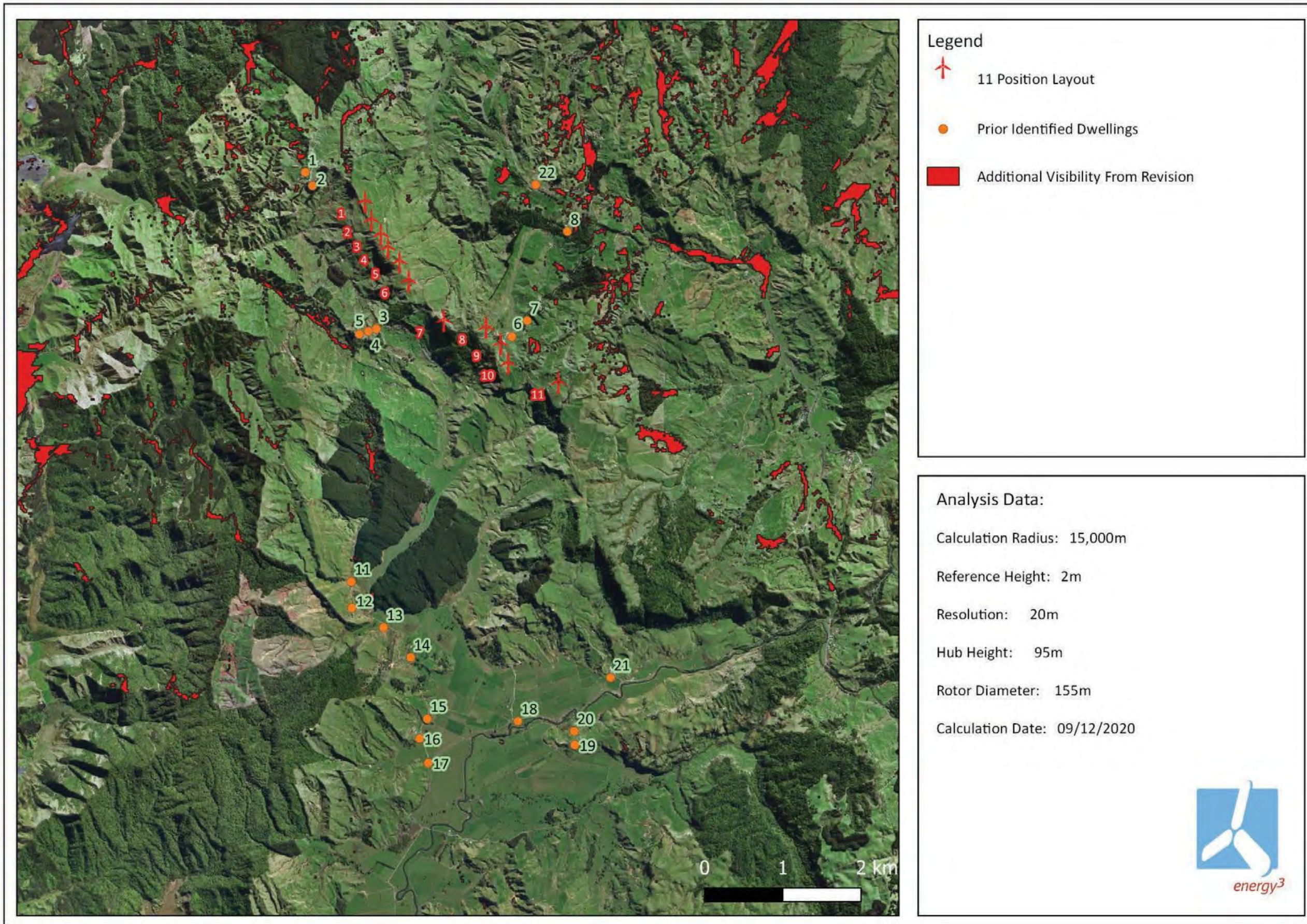


Figure 14: Dwellings identified in prior visibility study relative to new visibility variance

ATTACHMENT 4

ZONES OF THEORETICAL VISIBILITY MAPPING - NETT VISIBILITY INCREASE

(FROM FIGURE 13 MAP BY ENERGY3 SERVICES LTD REPORT PROVIDED BY APPLICANT)

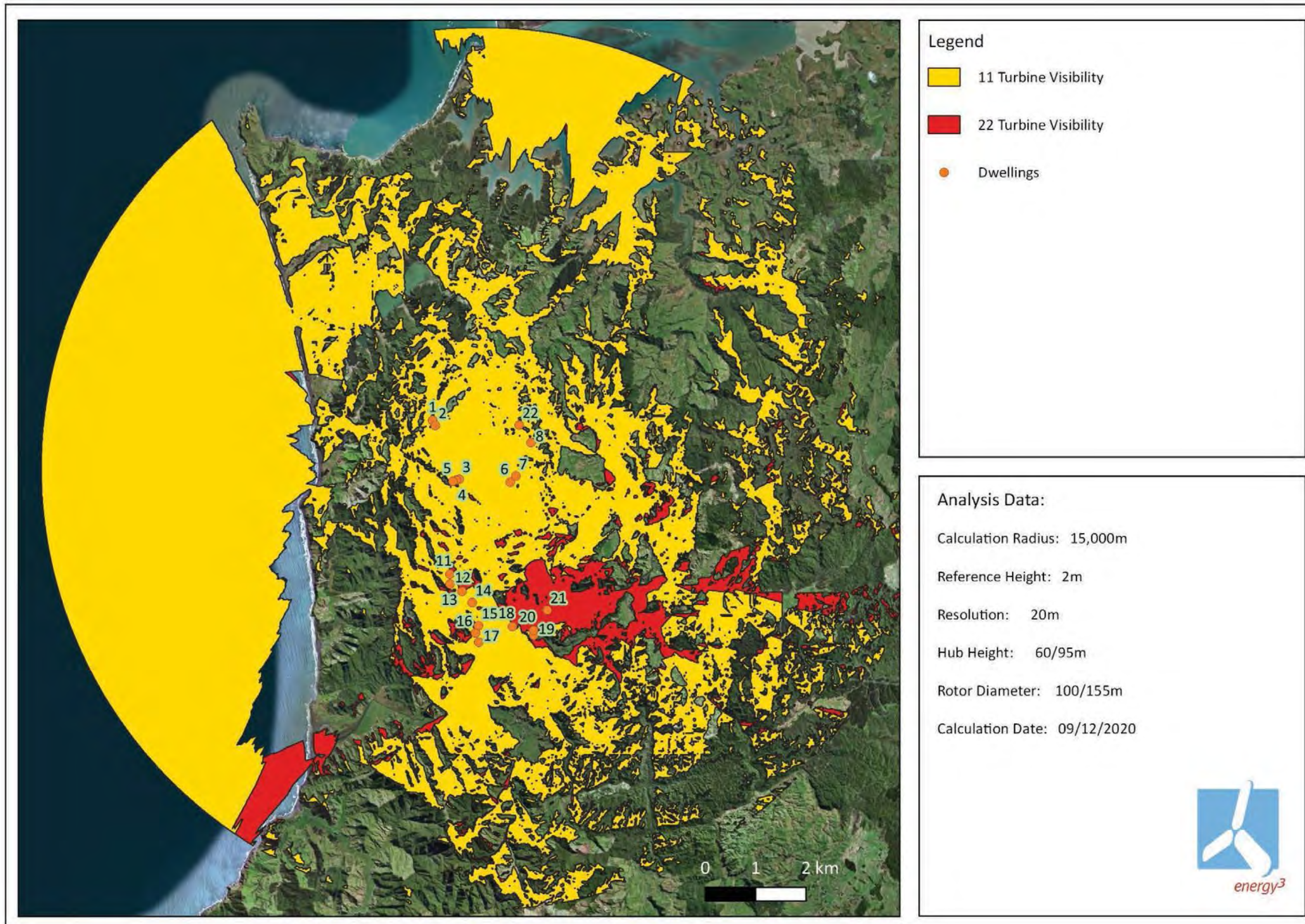


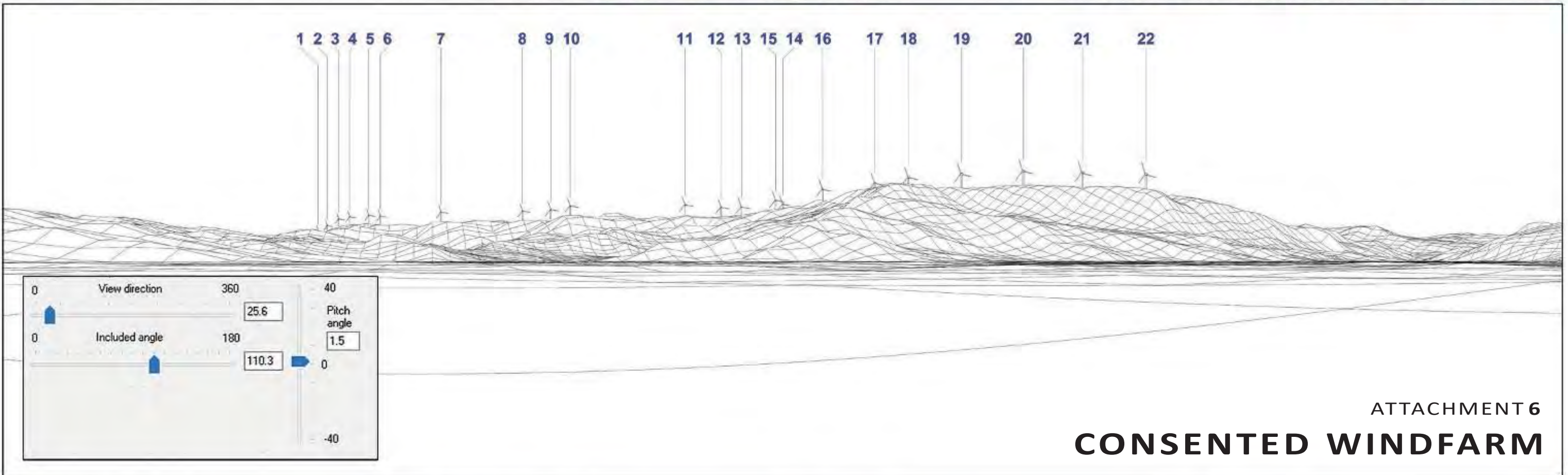
Figure 10: Visibility variance (11 turbines relative to 22)

ATTACHMENT 5

ZONES OF THEORETICAL VISIBILITY MAPPING - VISIBILITY VARIANCE

(FROM FIGURE 10 MAP BY ENERGY3 SERVICES LTD REPORT PROVIDED BY APPLICANT)

Viewpoint 4 Recommended Viewing Distance 13.9cm when printed A3 Landscape (40cm image width)



ATTACHMENT 6
CONSENTED WINDFARM

Tuamatotara Windfarm

Photomontages from
Viewpoint 4
Coutts Road Corner

Photomontage details:

- Grid Reference - 2665716 East
- 6324334 North
- Nearest Turbine - 3280 m
- Turbines Visible - 20
- Rotor Diameter - 100 m
- Tip Height - 110 m

Viewpoint Map



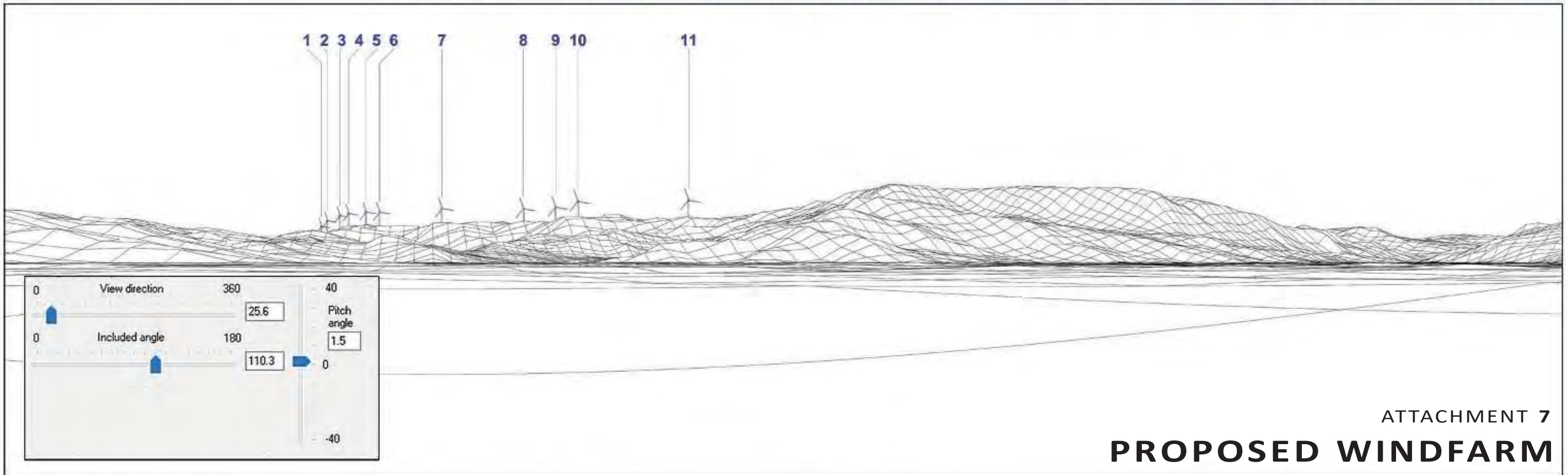
Prepared By:

Energy3 Services Limited



For:

Viewpoint 4 Recommended Viewing Distance 13.9cm when printed A3 Landscape (40cm image width)



ATTACHMENT 7
PROPOSED WINDFARM

Tuamatotara Windfarm

Photomontages from
Viewpoint 4
Coutts Road Corner

Photomontage details:

Grid Reference	-	2665716 East
	-	6324334 North
Nearest Turbine	-	3280 m
Turbines Visible	-	11
Rotor Diameter	-	155 m
Tip Height	-	172.5 m

Viewpoint Map



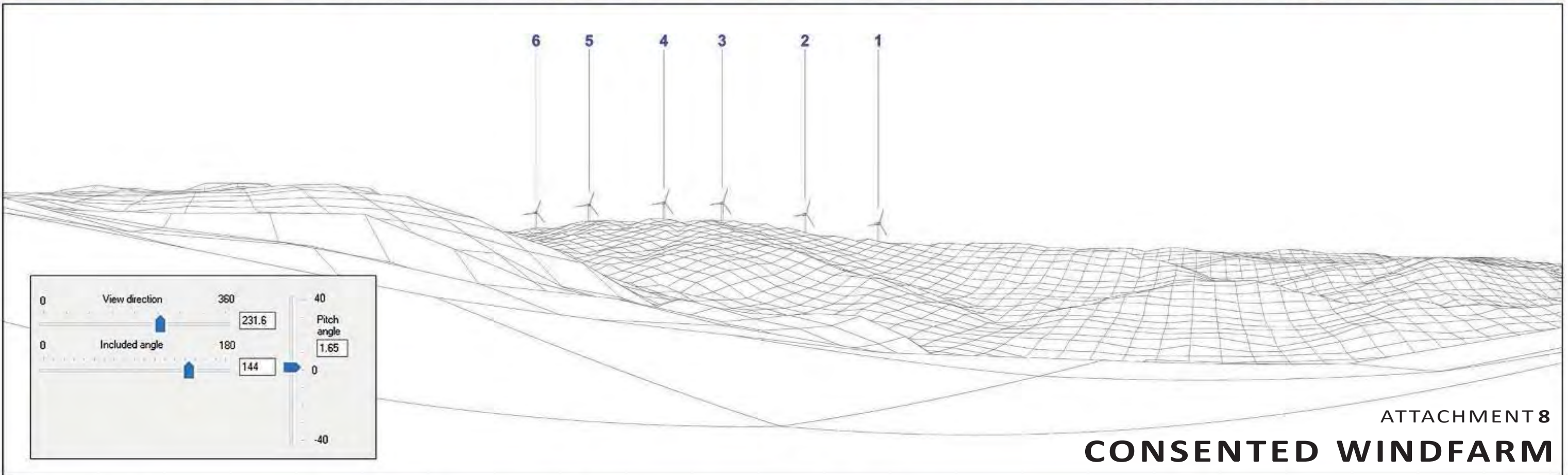
Prepared By:

Energy3 Services Limited



For:

Viewpoint 7 Recommended Viewing Distance 6.5cm when printed A3 Landscape (40cm image width)



View direction: 360 (slider at 231.6)

Included angle: 180 (slider at 144)

Pitch angle: 40 (slider at 1.65)

0 40

0 180

0 -40

ATTACHMENT 8
CONSENTED WINDFARM

Tuamatotara Windfarm

Photomontages from
Viewpoint 7
Taharoa Road

Photomontage details:

- Grid Reference - 2666575 East
- 6332420 North
- Nearest Turbine - 2006 m
- Turbines Visible - 6
- Rotor Diameter - 100 m
- Tip Height - 110 m

Viewpoint Map



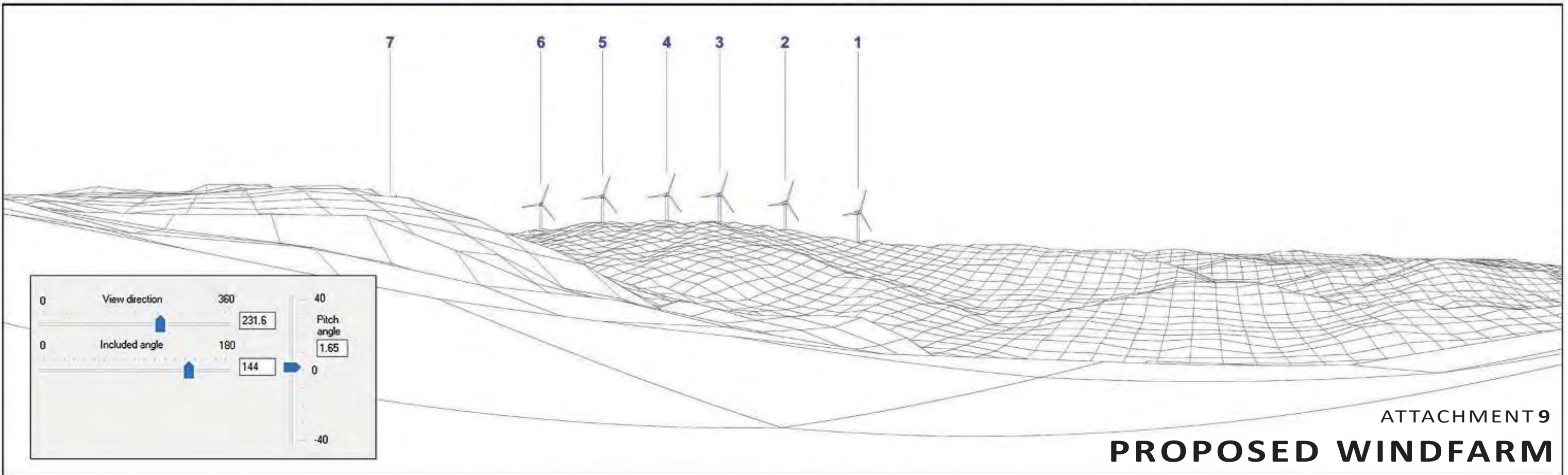
Prepared By:

Energy3 Services Limited



For:

Viewpoint 7 Recommended Viewing Distance 6.5cm when printed A3 Landscape (40cm image width)



ATTACHMENT 9
PROPOSED WINDFARM

Tuamatotara Windfarm

Photomontages from
Viewpoint 7
Taharoa Road

Photomontage details:

- Grid Reference - 2666575 East
- 6332420 North
- Nearest Turbine - 2006 m
- Turbines Visible - 7
- Rotor Diameter - 155 m
- Tip Height - 172.5 m

Viewpoint Map



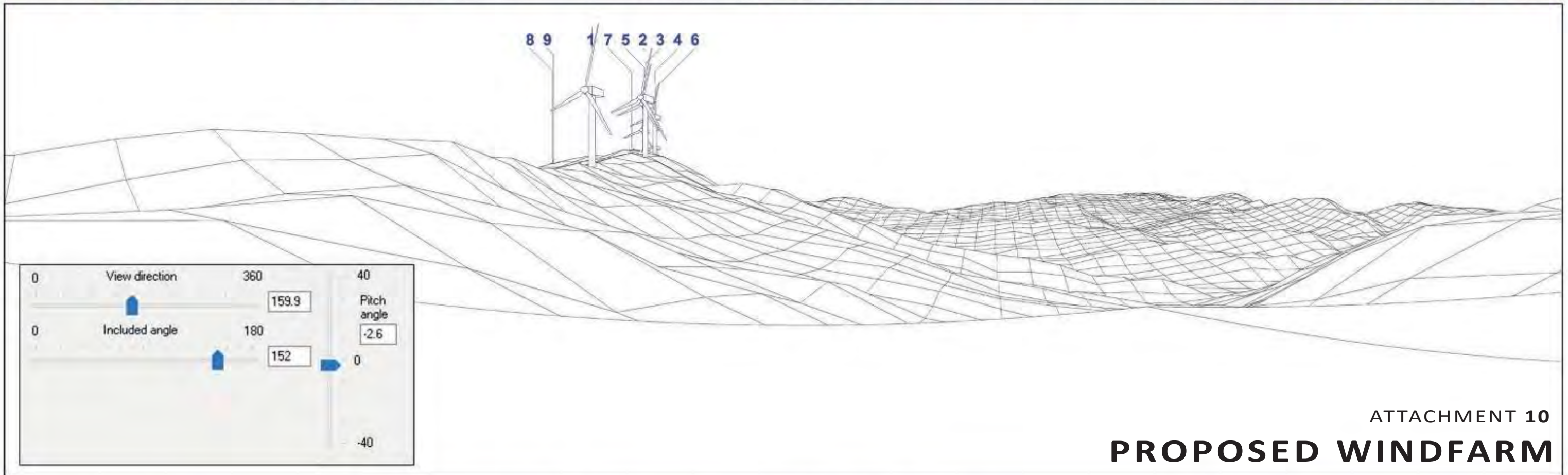
Prepared By:

Energy3 Services Limited



For:

Viewpoint 1 Recommended Viewing Distance 5cm when printed A3 Landscape (40cm image width)



ATTACHMENT 10
PROPOSED WINDFARM

Tuamatotara Windfarm

Photomontages from
Viewpoint 1
TM Station Ltd

Photomontage details:

- Grid Reference - 2664407 East
- 6331926 North
- Nearest Turbine - 723 m
- Turbines Visible - 9
- Rotor Diameter - 155 m
- Tip Height - 172.5 m

Viewpoint Map



Prepared By:

Energy3 Services Limited



For: